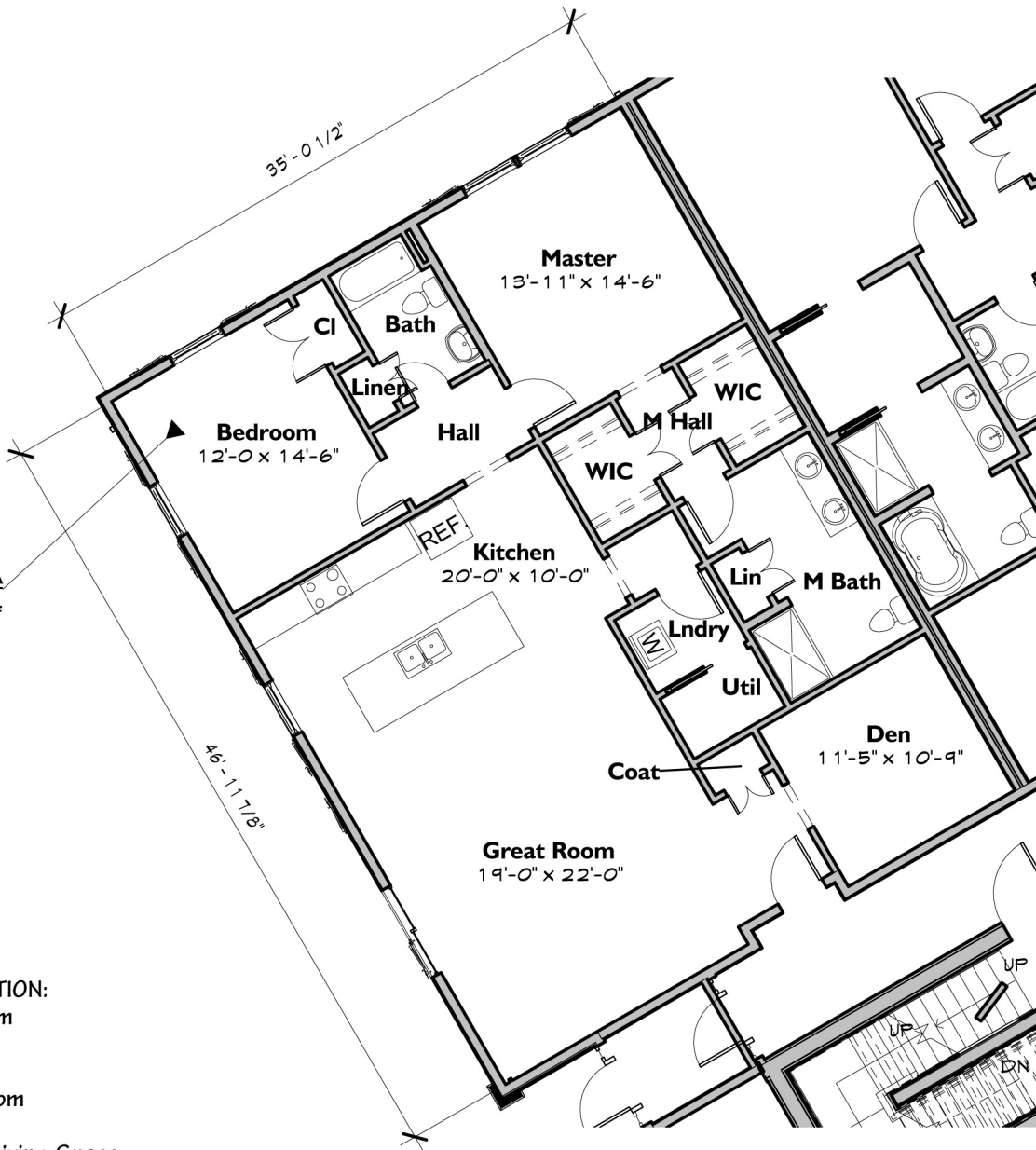


**Unit IA**  
1638 SF



**DESCRIPTION:**  
 2 Bedroom  
 2 Bath  
 Kitchen  
 Great Room  
 Den  
 Outdoor Living Space

**LOCATION:**  
 First Floor  
 West Wing - Rear  
 Corner Unit

**Unit IA Plan**  
Information Not Guaranteed

**THE Loudon House**  
CONDOMINIUMS  
1 Schuyler Road  
Loudonville, New York 12211

Quality Construction  
Delivered By

**BCI**  
CONSTRUCTION INC.  
BUILDING BEYOND YOUR EXPECTATIONS  
20 Loudonville Road, Albany, NY 12204  
518.426.3200 | www.bciinc.com

**SYVERTSEN**  
Architecture, PLLC  
Six Chelsea Place  
Clifton Park, NY 12065  
Tel 518.348.1151  
Fax 518.348.2125  
Web www.SArch3d.com



[www.loudonhouse.com](http://www.loudonhouse.com)