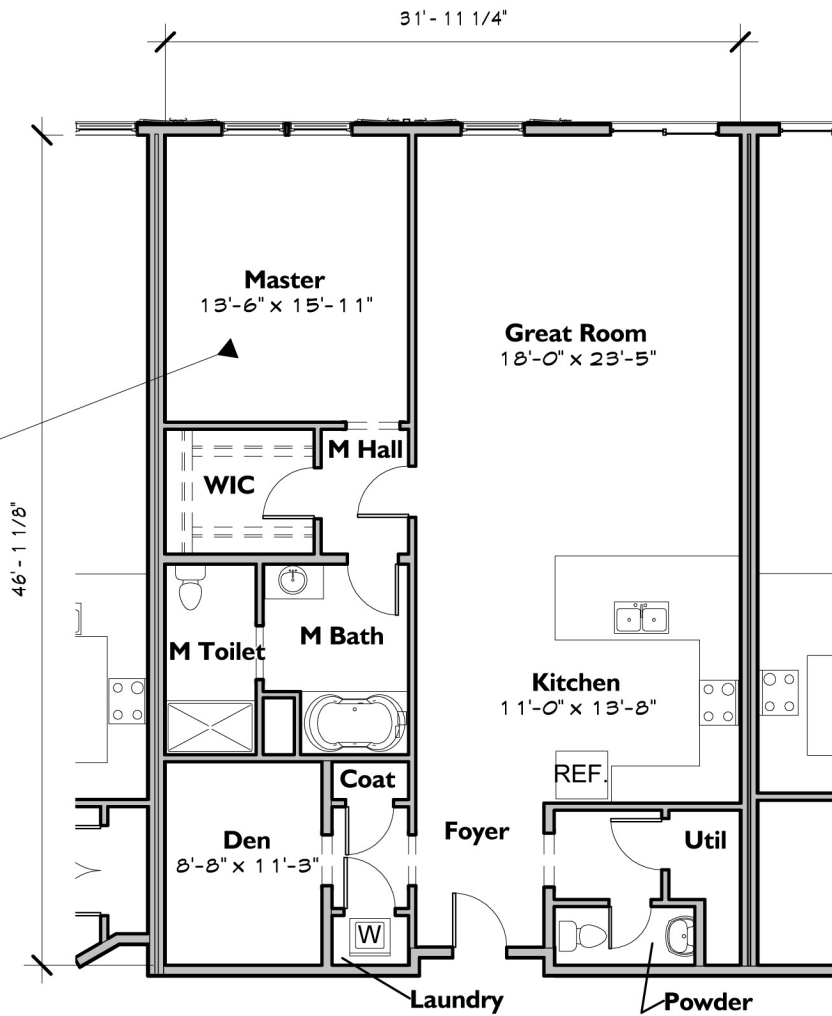
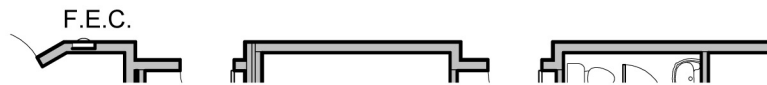


UNIT IC
1464 SF



DESCRIPTION:
 1 Bedroom
 1.5 Bath
 Kitchen
 Great Room
 Den
 Outdoor Living Space



Den
93 SF

LOCATION:
 First Floor
 Center Section - Rear

Unit IC Plan
 Information Not Guaranteed

THE Loudon House
 CONDOMINIUMS
 1 Schuyler Road
 Loudonville, New York 12211

Quality Construction
 Delivered By

BCI
 CONSTRUCTION INC
 BUILDING BEYOND YOUR EXPECTATIONS
 20 Loudonville Road, Albany, NY 12204
 518.426.3200 | www.bciinc.com

SYVERTSEN
 Architecture, PLLC
 Six Chelsea Place
 Clifton Park, NY 12065
 Tel 518.348.1151
 Fax 518.348.2125
 Web www.SArch3d.com



www.loudonhouse.com