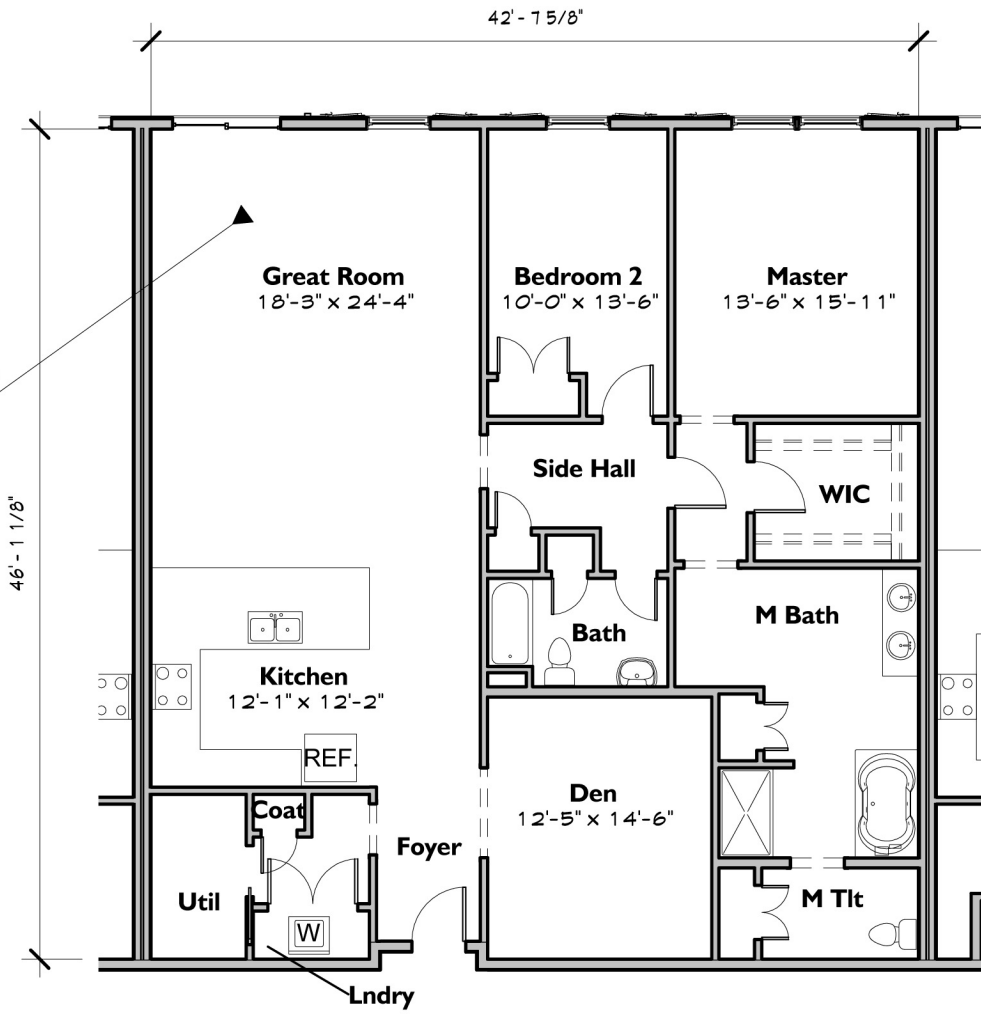


UNIT ID
1959 SF

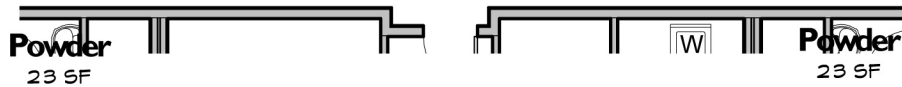


DESCRIPTION:

- 2 Bedroom
- 2 Bath
- Kitchen
- Great Room
- Den
- Outdoor Living Space

LOCATION:

- First Floor
- Center Unit - Rear



Unit ID Plan

Information Not Guaranteed

THE Loudon House
CONDOMINIUMS
1 Schuyler Road
Loudonville, New York 12211

Quality Construction
Delivered By

BCI
CONSTRUCTION INC
BUILDING BEYOND YOUR EXPECTATIONS
20 Loudonville Road, Albany, NY 12204
518.426.3200 | www.bciinc.com

SYVERTSEN
Architecture, PLLC
Six Chelsea Place
Clifton Park, NY 12065
Tel 518.348.1151
Fax 518.348.2125
Web www.SArch3d.com



www.loudonhouse.com