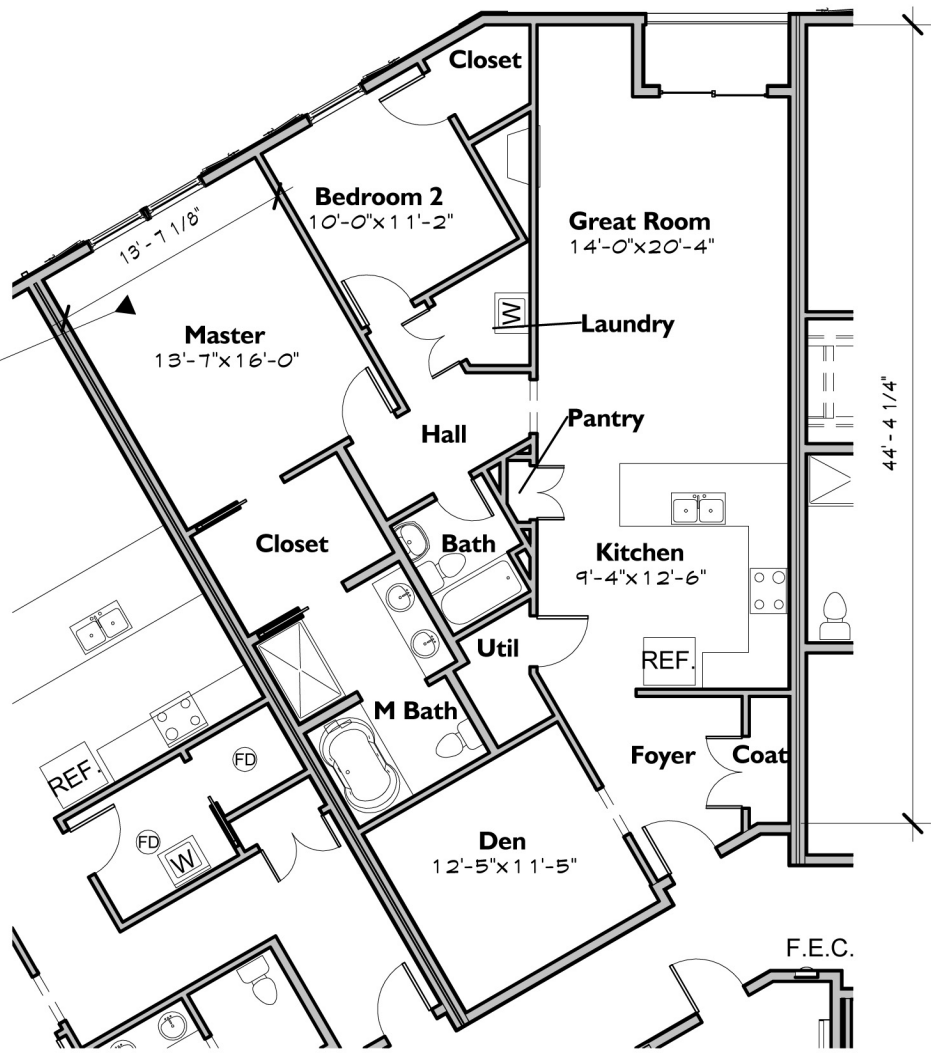


Unit 2B
1486 SF



DESCRIPTION:
 2 Bedroom
 2 Bath
 Kitchen
 Great Room
 Den
 Outdoor Living Space

LOCATION:
 Second Floor
 West Wing - Rear

Unit 2B Plan
Information Not Guaranteed

THE Loudon House
CONDOMINIUMS
1 Schuyler Road
Loudonville, New York 12211

Quality Construction
Delivered By

BCI
CONSTRUCTION INC
BUILDING BEYOND YOUR EXPECTATIONS
20 Loudonville Road, Albany, NY 12204
518.426.3200 | www.bciinc.com

SYVERTSEN
Architecture, PLLC
Six Chelsea Place
Clifton Park, NY 12065
Tel 518.348.1151
Fax 518.348.2125
Web www.SArch3d.com

www.loudonhouse.com